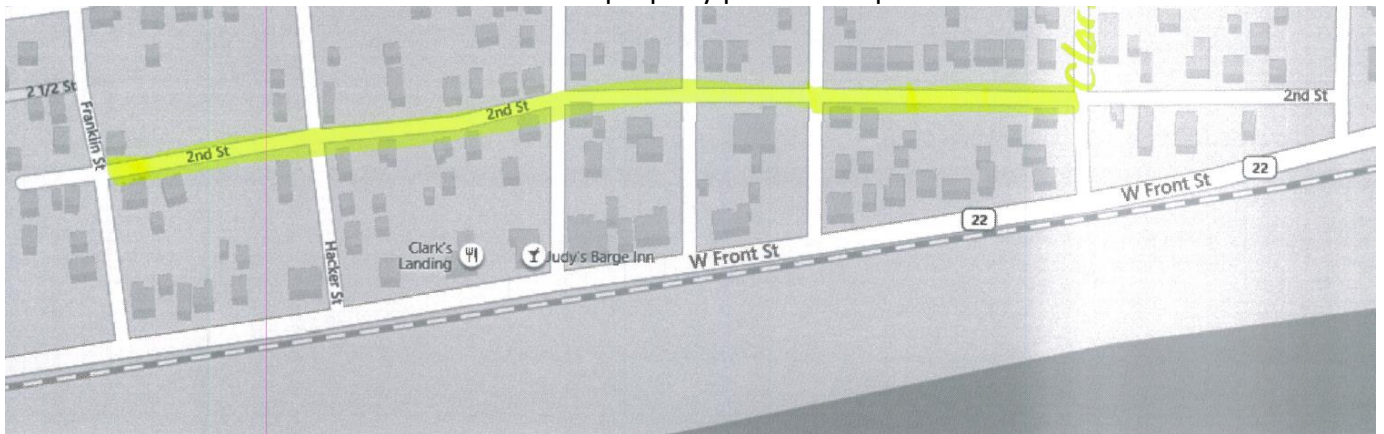


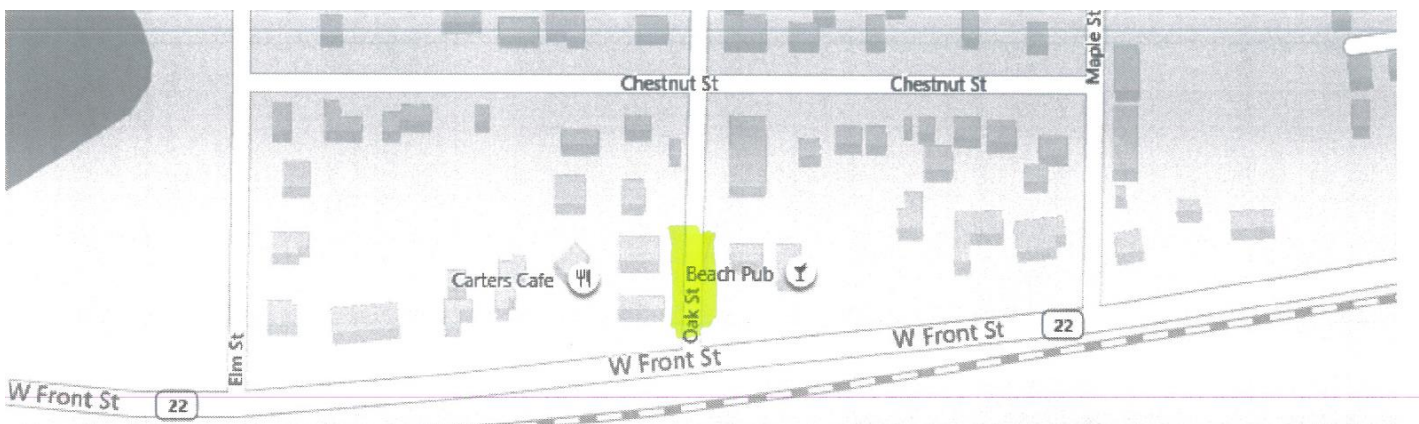
Due to the possibility of flooding this spring, the city wanted to take an opportunity to remind property owners located in the floodplain of available resources, their flood risk, and ways to protect themselves and their property in the event flooding occurs.

With the potential of flooding there may be street closures that affect where the garbage trucks are able to drive. **If road closures occur** waste pick-ups will be move according to the following:

If you normally have trash pick-up on Front Street or in the alley between Front and Second you will need to put your trash somewhere along Second Street (highlighted area). Make sure to leave at least three feet between cans so that the truck can properly pick them up. Please be courteous to others.



If you normally have pick up along Front Street and Highway 22 is closed please put your trash along Oak Street (highlighted area). Make sure to leave at least three feet between cans so that the truck can properly pick them up. Please be courteous to others.



If you are in the 1400 Block of Front Street and water is over the private road please put cans along Highway 22 (highlighted areas). Make sure to leave at least three feet between cans so that the truck can properly pick them up. Please be courteous to others.



**These changes are only if road closures occur!**